



The **ER1000** station is designed to lift and deliver pallets up to 1000 KG supporting **MIR 500/1000**

Faster & Predictable Operation - The ER1000 is a drive through station which means the MIR500 /MIR 1000 access the station without reversing from delivery points resulting in a faster and predictable operation in the system.

One control unit - ER1000 dispenser can be extended to consist of two stations for delivery and pickup station with only one control unit in the center. The communication protocol is based on the latest OPC-UA between MIR 500 and MIR 1000 to the station.

Request for robot pallet pick up - ER1000 consist of full communication for MIR500 /MIR1000 to call or request for robot pallet pickup.



Use

Automatic controlled lifting pallet station for use with MIR 500/1000 robot

User interfaces

Up/down and robot call push buttons

Dimensions

Length x Width x Height	1805 x 1350 x 472-900mm
Weight	290Kg
Pallet underside height over th floor, low pos	80 mm
Pallet underside height over the floor, high pos	760 mm

Safety

Hand operated emergency stop on the control bar
Hose break protection on cylinders, no collapse
Foot protection stop contacts (under pallet frame)

Electrical

Supply voltage	400 VAC
Line Frequency	50 Hz
Fuse current (max)	10 A
Power Consumption	25 - 850 W

Connection

Cabled interface	RJ45
------------------	------

Environmental

Operating temperature	0 – 35 °C
Humidity	Max. 95% non- condensing
IP rating	IP21 enclosure

Load

Maximum payload	1000kg
-----------------	--------

Pallet Condition

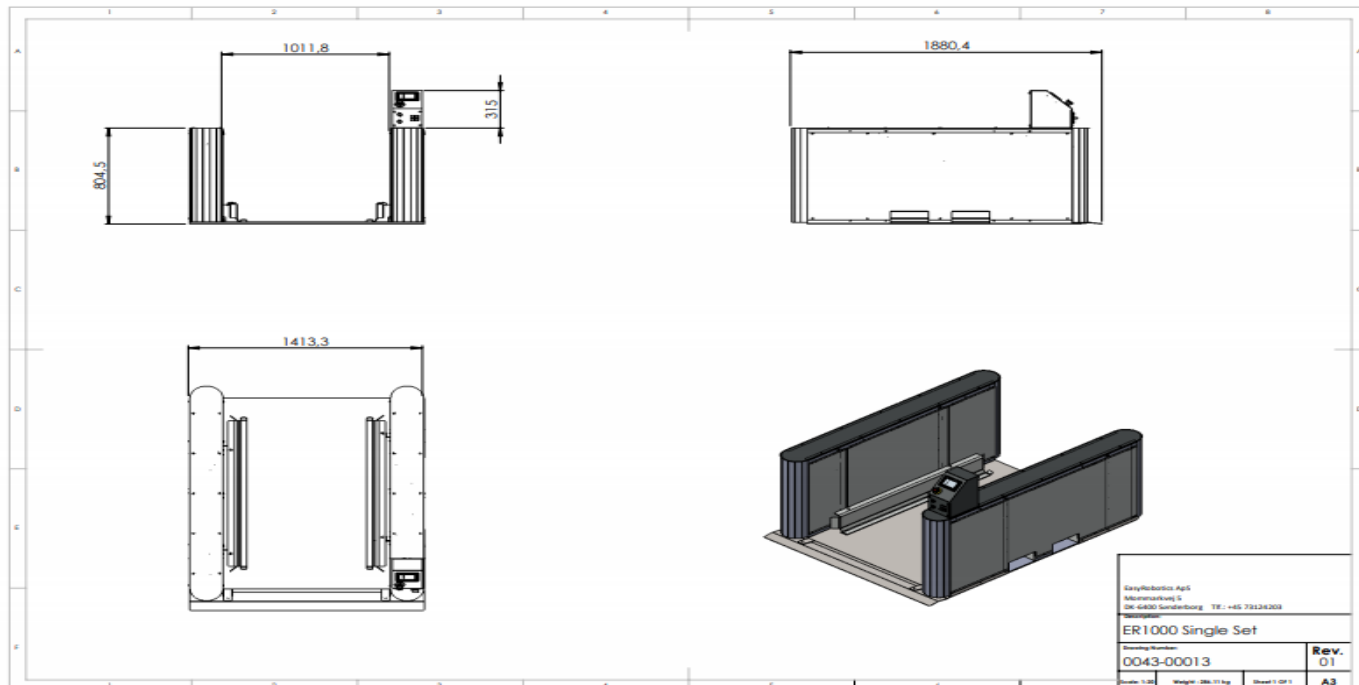
Undamaged, original strength maintained (grade A or B)

Recommended free robot working area in front of pallet station

Working area	3 x 3 m
--------------	---------

Safety

Rated to EN ISO 13849-1: Performance Level (PL) C



Communication Output ER1000

1: ER1000 ready for receive | 2: Handshake ER1000 Receive pallet and leave | 3: ER1000 ready for delivery
4: ER1000 pallet delivered.

**Danish Manufacturer and supplier of
robotic cells for all types of
automation**



EasyRobotics ApS

Mønstervej 5
DK-6400 Sønderborg
Phone: (+45) 31 25 06 02
Email: info@easayrobotics.dk
www.easyrobotics.biz